


Identifier	Service Document	
Service SH		
I-H-PU-01 How to set up Brass casting components in VPC Pure		Römerstr. 21 D – 71296 Heimsheim Tel.: + 49(0)7033-309878-41 service@schultheiss-gmbh.de http://www.schultheiss-gmbh.de

Apply for:

Machine Type	Version	Year
VPC Pure	All	Since Release

Problem

How to set up Brass casting components in VPC Pure

Tools

- Hex Key 2,5 mm
- Hex Key 5mm
- Hex Key 3 mm
- Crosshead / Phillips screwdriver
- Tube Hose Cutter
- Plier

Warning and Hazards



Prerequisites

- Order the Brass casting components, the reference number is **BGM900092**
- The following articles should be received



ES000109 – Spiral Tube - 340mm



2pc. Hose Clamps

2pc. Screws M4 x 8 mm

1pc. Stopper G1/8

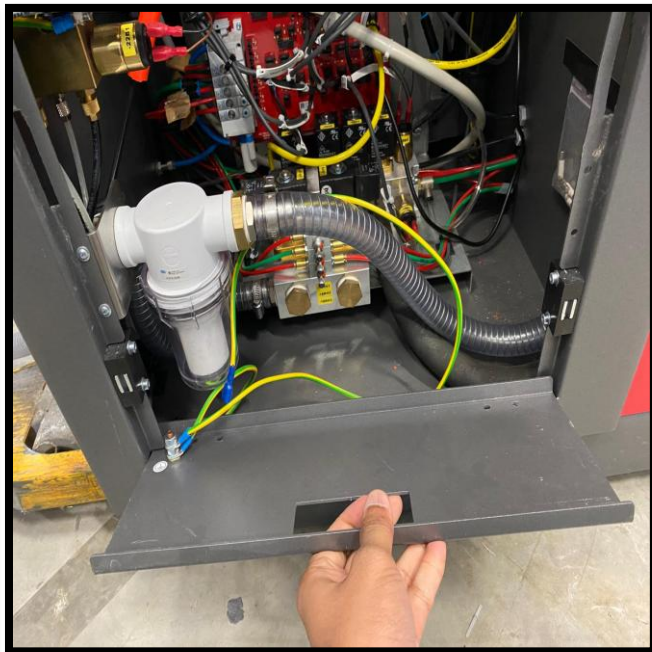
1pc. White Gasket G1/8

Procedure

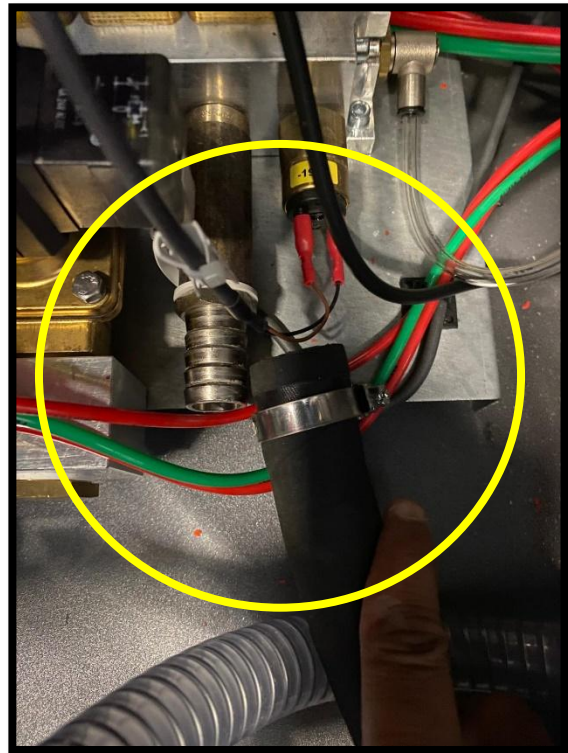
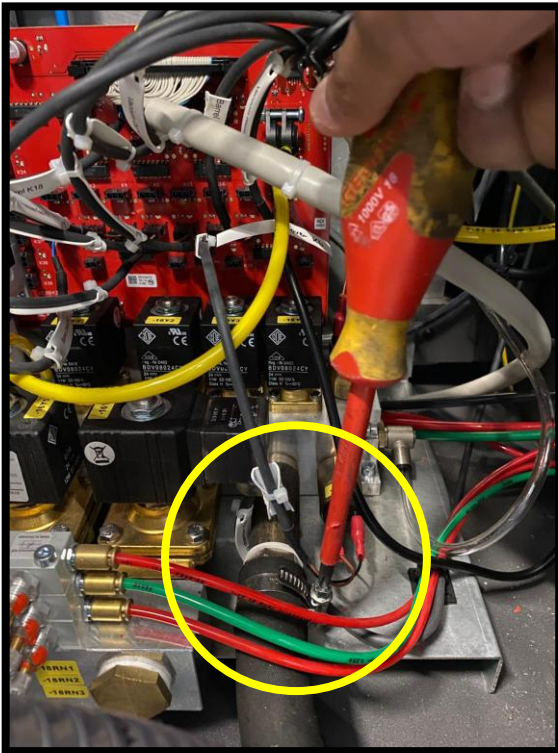
- Turn OFF the machine and disconnect the main plug from the electrical socket
- Use the Hex key (5mm) to open the Left panel of the machine



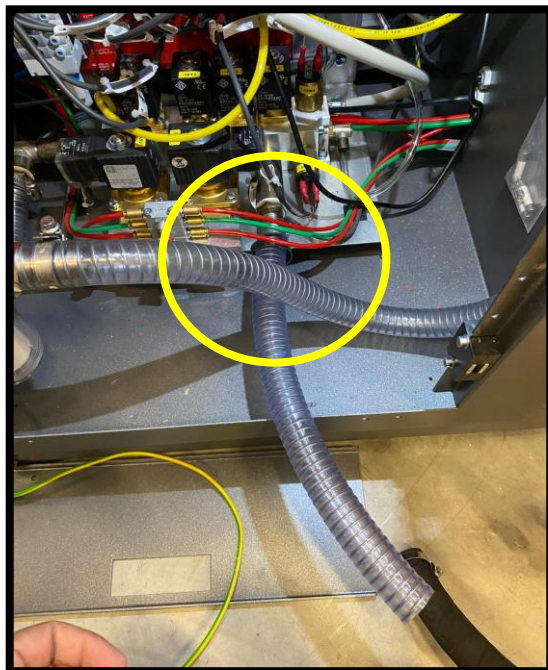
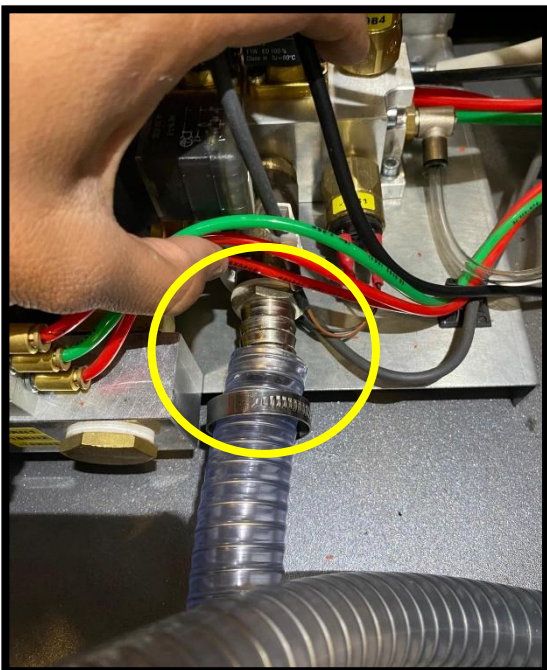
- Lower the Lid to have full access inside the machine



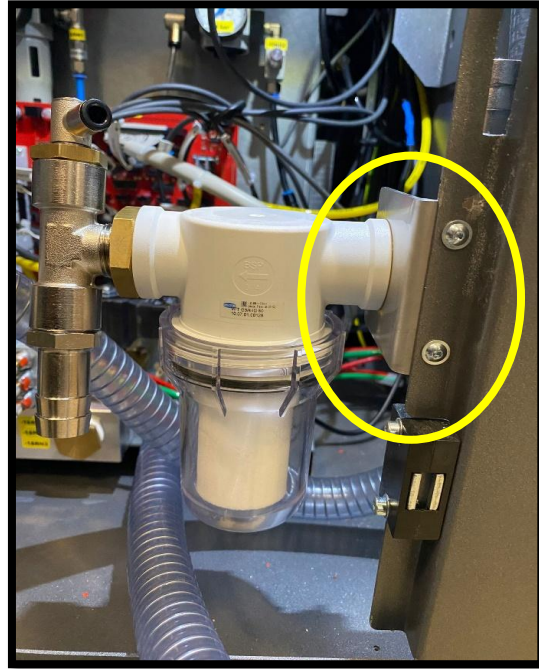
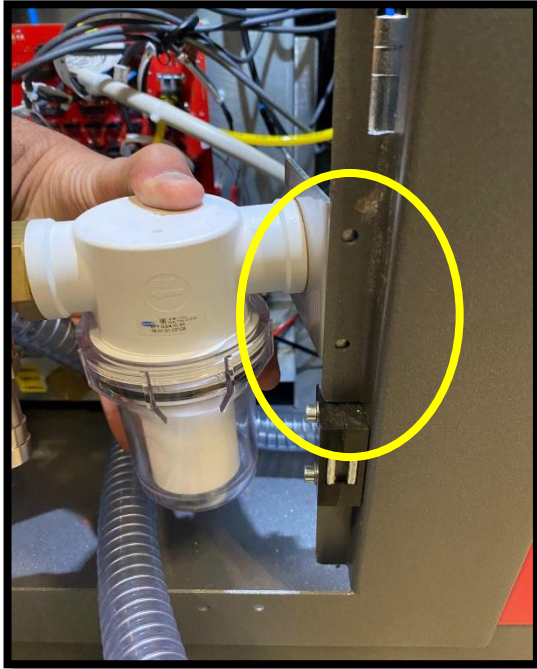
- Use the Screwdriver to loosen the hose clamp
- Once loosen, pull the black hose out, which will be connected later to the filter assembly



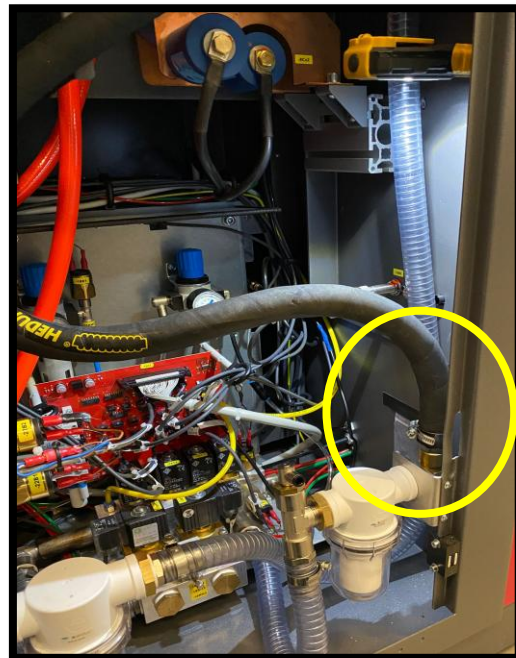
- Connect the transparent Spiral tube to the nipple connector
- Tighten the tube with the 1x clamp hose (ZA000054) to this end



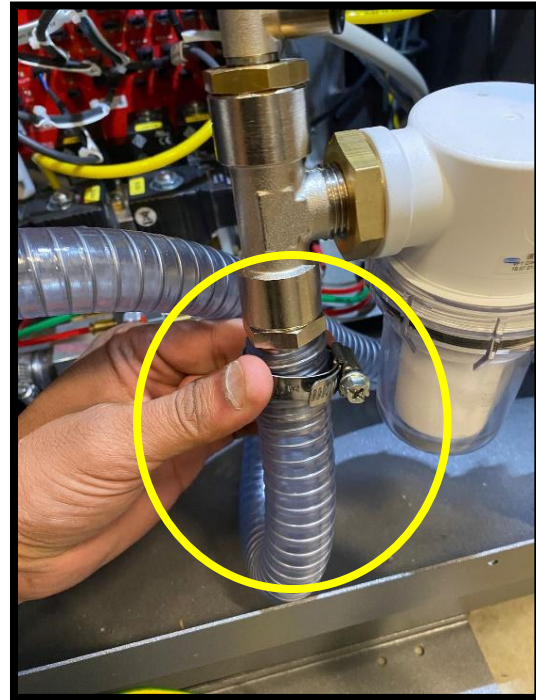
- The filter assembly should be connected to the left bottom side. The holes are already drilled in the housing
- Using Hex key 2,5mm tighten the 2x screws M4 x 8 to fix the filter assembly



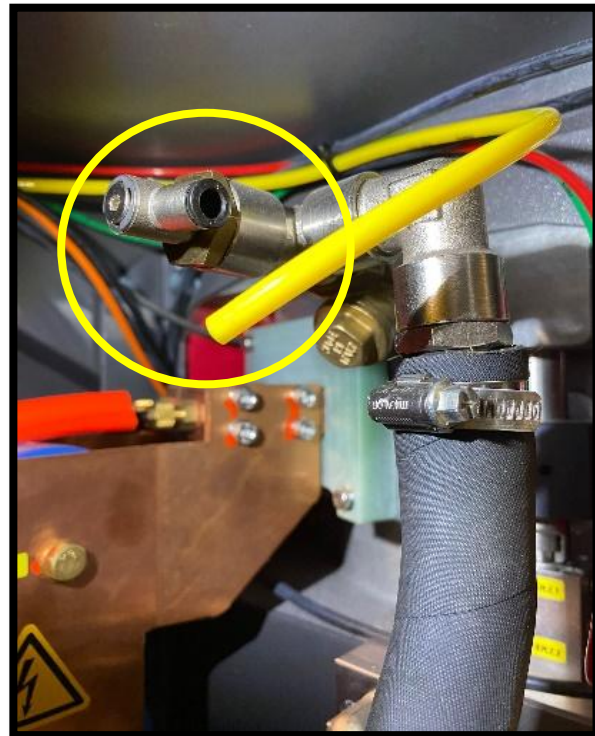
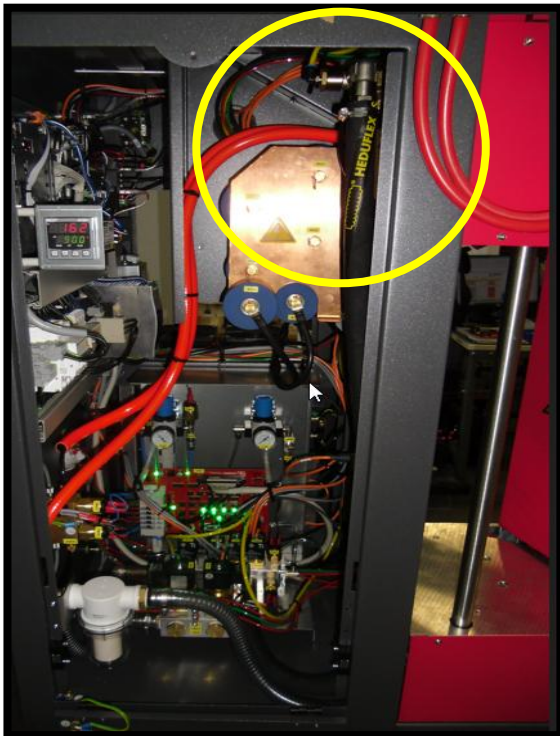
- Connect the black hose into the Right side of the filter assembly in the nipple connector
- Tighten the black hose with the clamp hose using the screwdriver



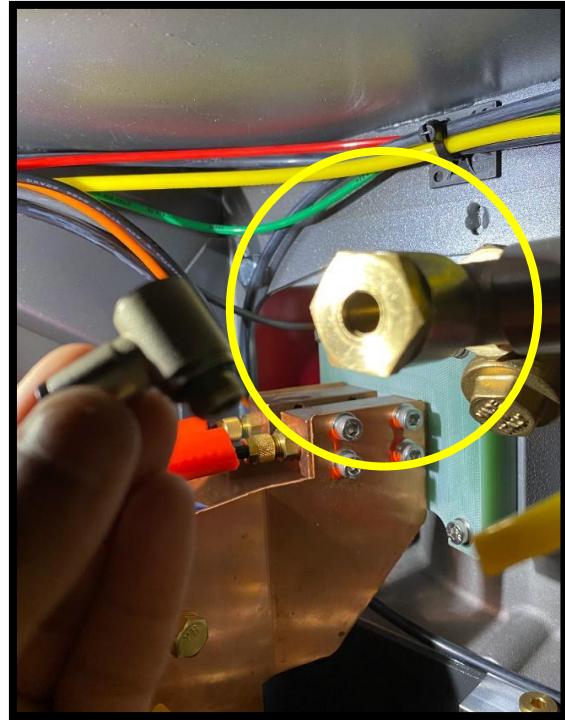
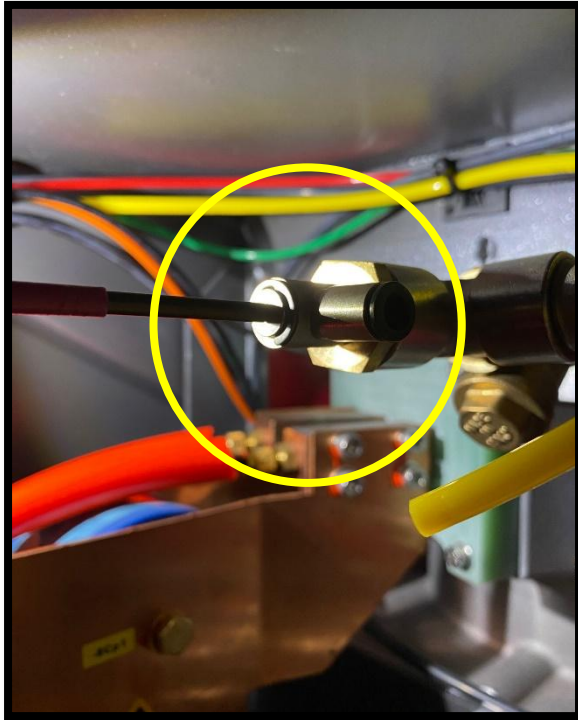
- Connect the transparent Spiral hose to the left side of the filter assembly
- Tighten the tube with the 1x clamp hose (ZA000054)



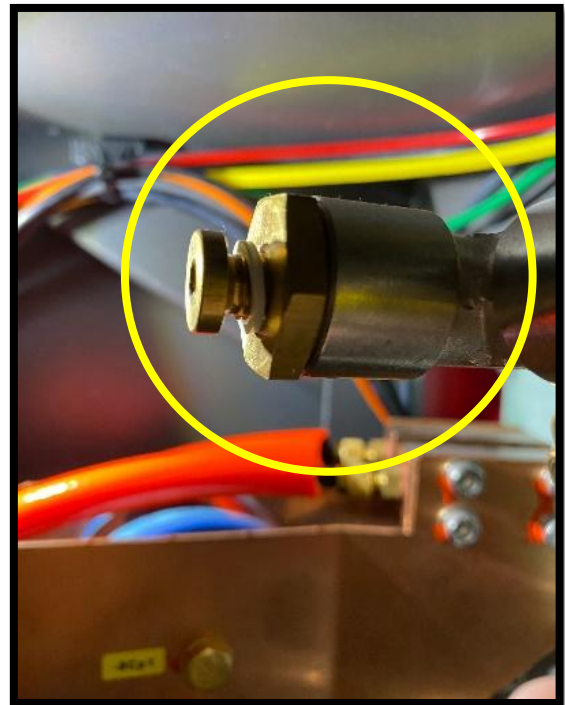
- Remove the Yellow Tube from the pneumatic connector on the top right side



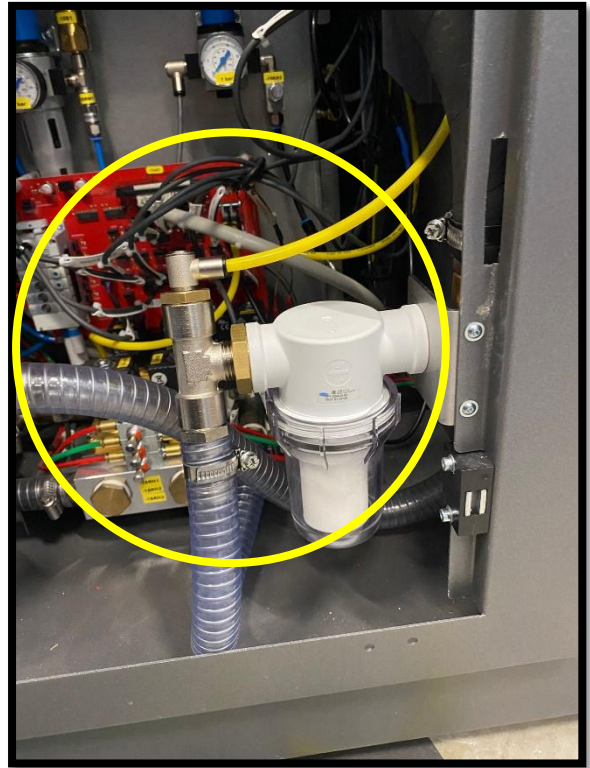
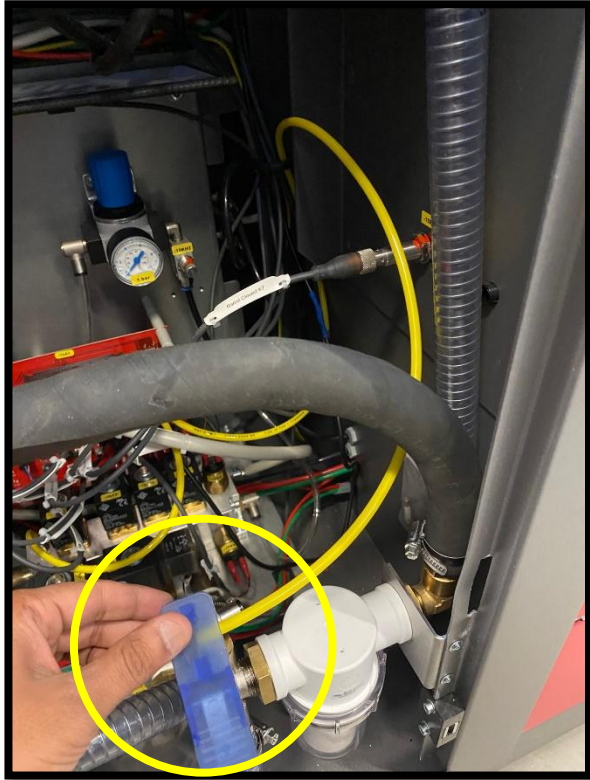
- Use the Hex key 3mm to remove the pneumatic connector



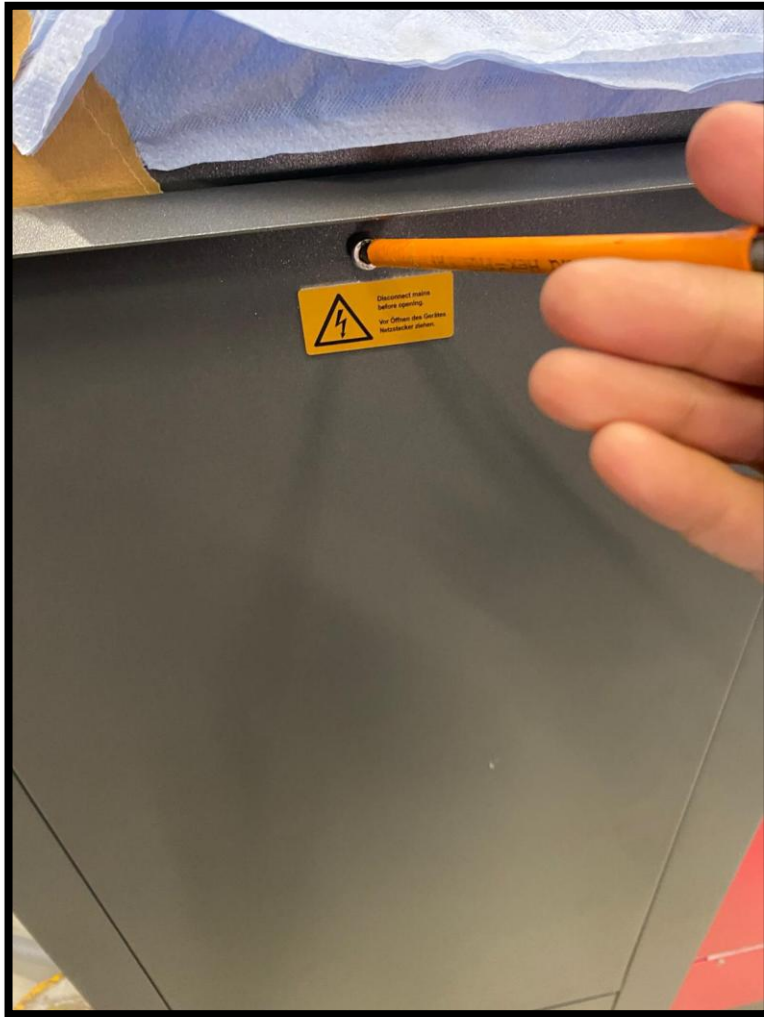
- Put the white gasket (VD000088) and put it on the Stopper (PZ000028)
- Tighten them using the Hex Key 3mm ,where pneumatic connector was removed from. Pneumatic connector is not required anymore



- The Yellow tube is held with the other tube with cable ties, using Plier cut the cable ties to remove take out the Yellow tube
- Once the tube is out then, cut the appropriate length using the tube cutter and fit it into the pneumatic connector of the filter assembly



- Once connected, then close the panels and the assembly is completed



In case the problem still exists, please feel free to contact us again

E-Mail: service@schultheiss-gmbh.de

Schultheiss GmbH