


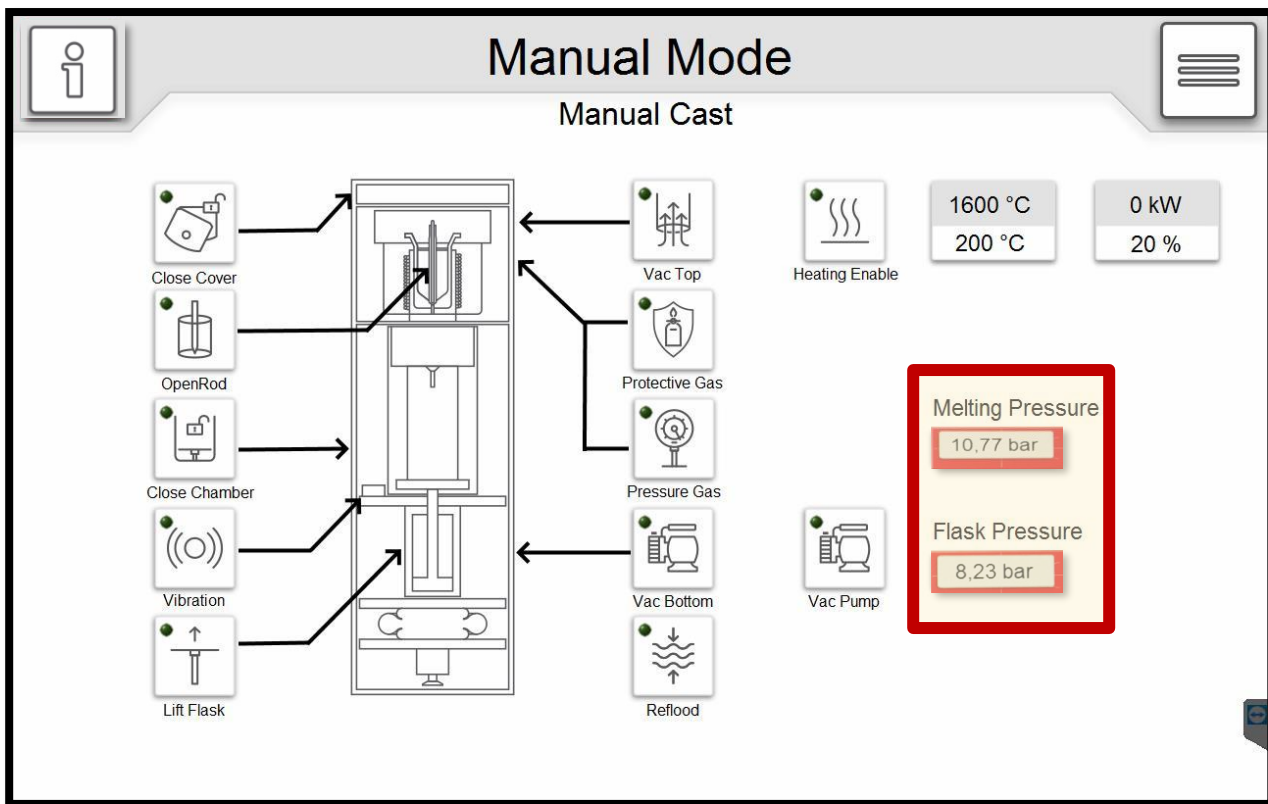
Identifier Service SH	<h1>Service Document</h1>	
<h2>T-S-PU-01 How to Reset Pressure Sensors</h2>		Römerstr. 21 D – 71296 Heimsheim Tel.: + 49(0)7033-309878-41 service@schultheiss-gmbh.de http://www.schultheiss-gmbh.de

Apply for:

Machine Type	Version	Year
VPC 66/100/ Pure	All	Since Release

Problem

Pressure values have an offset and not showing 0.00 bars in Melting and Flask chambers

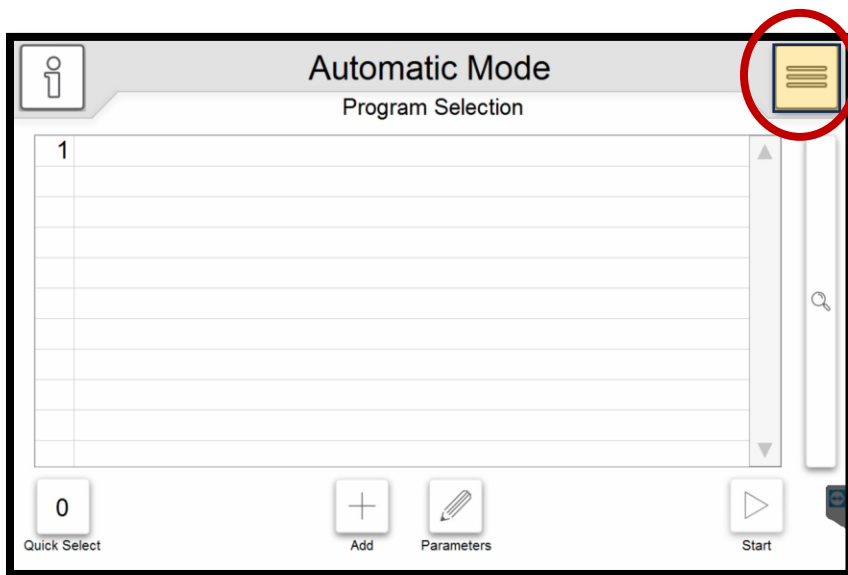


Pre-requisites

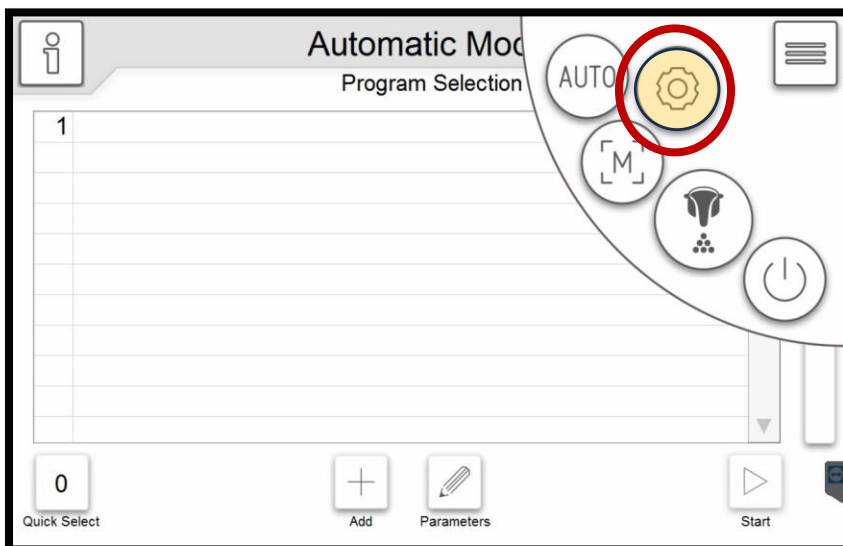
- Protection Gas bottle should be connected
- The gas regulator should be turned ON

Procedure

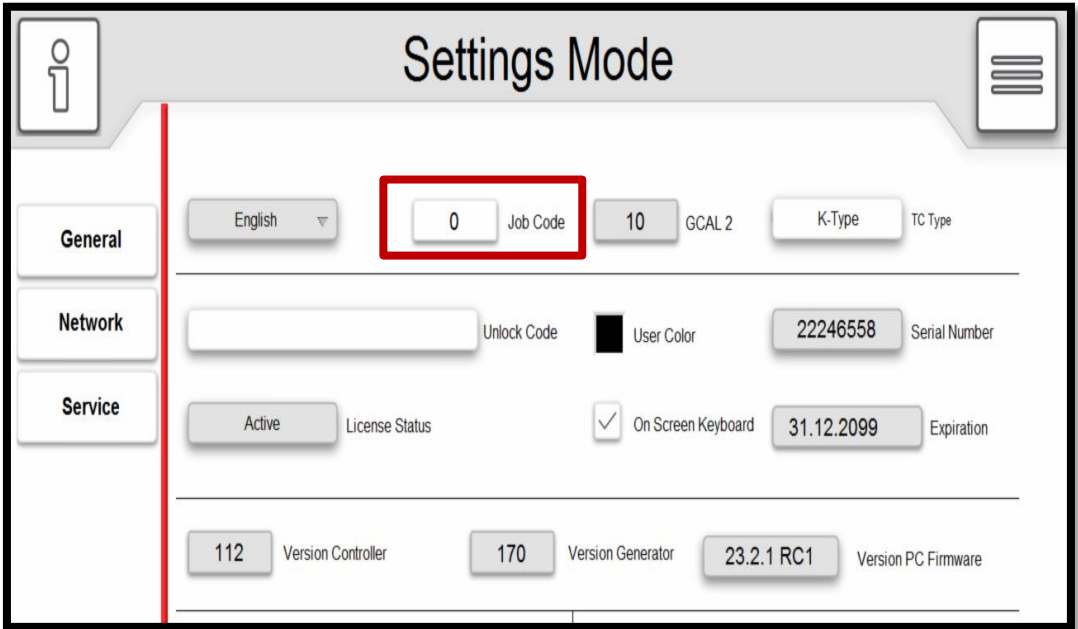
- Press to open menu selection



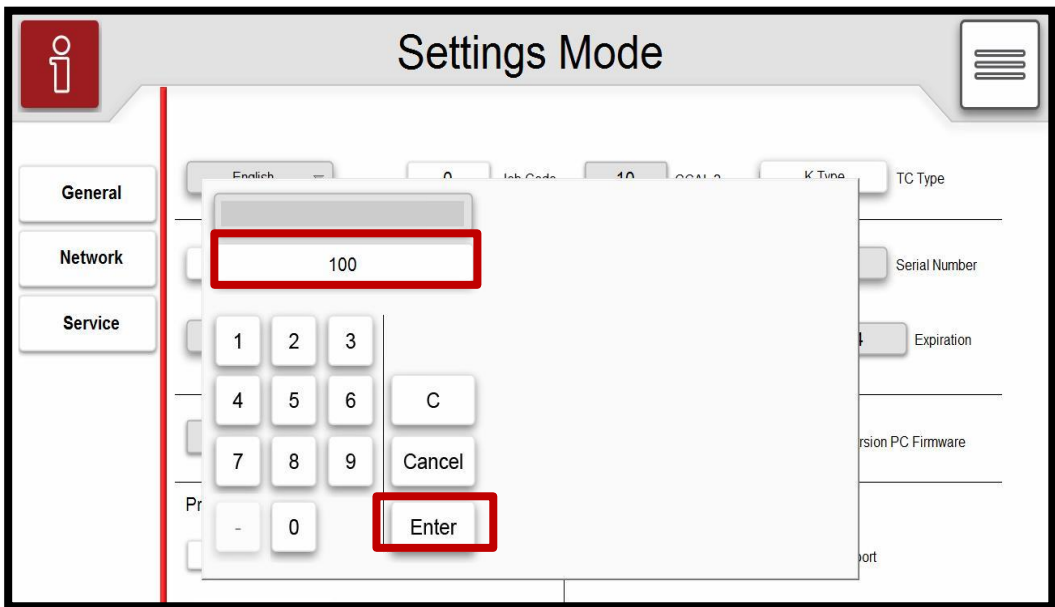
- Select to enter settings menu



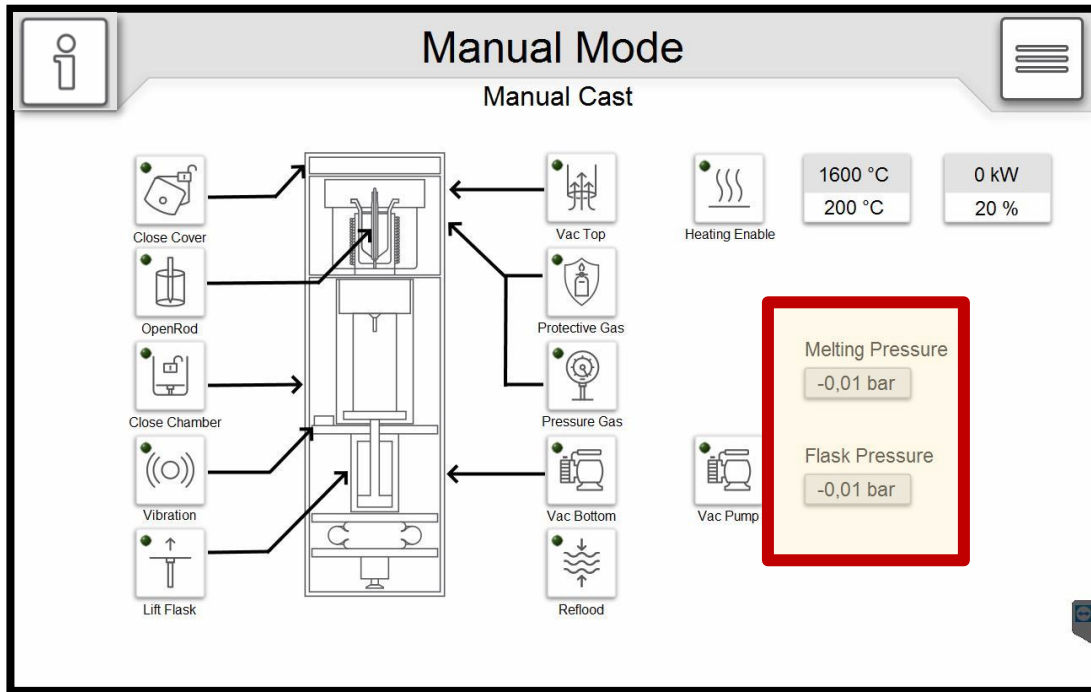
- Click on Job Code to insert the code '100'



- Inserting '100' in the tab and press **Enter**
- 'Click' noise of the valves will be heard and the gas will be released, resetting the sensors



- Repeat the process Twice and sensors will be reset to 0.00 bars



In case the problem still exists, please feel free to contact us again.

E-Mail: service@schultheiss-gmbh.de

Schultheiss GmbH